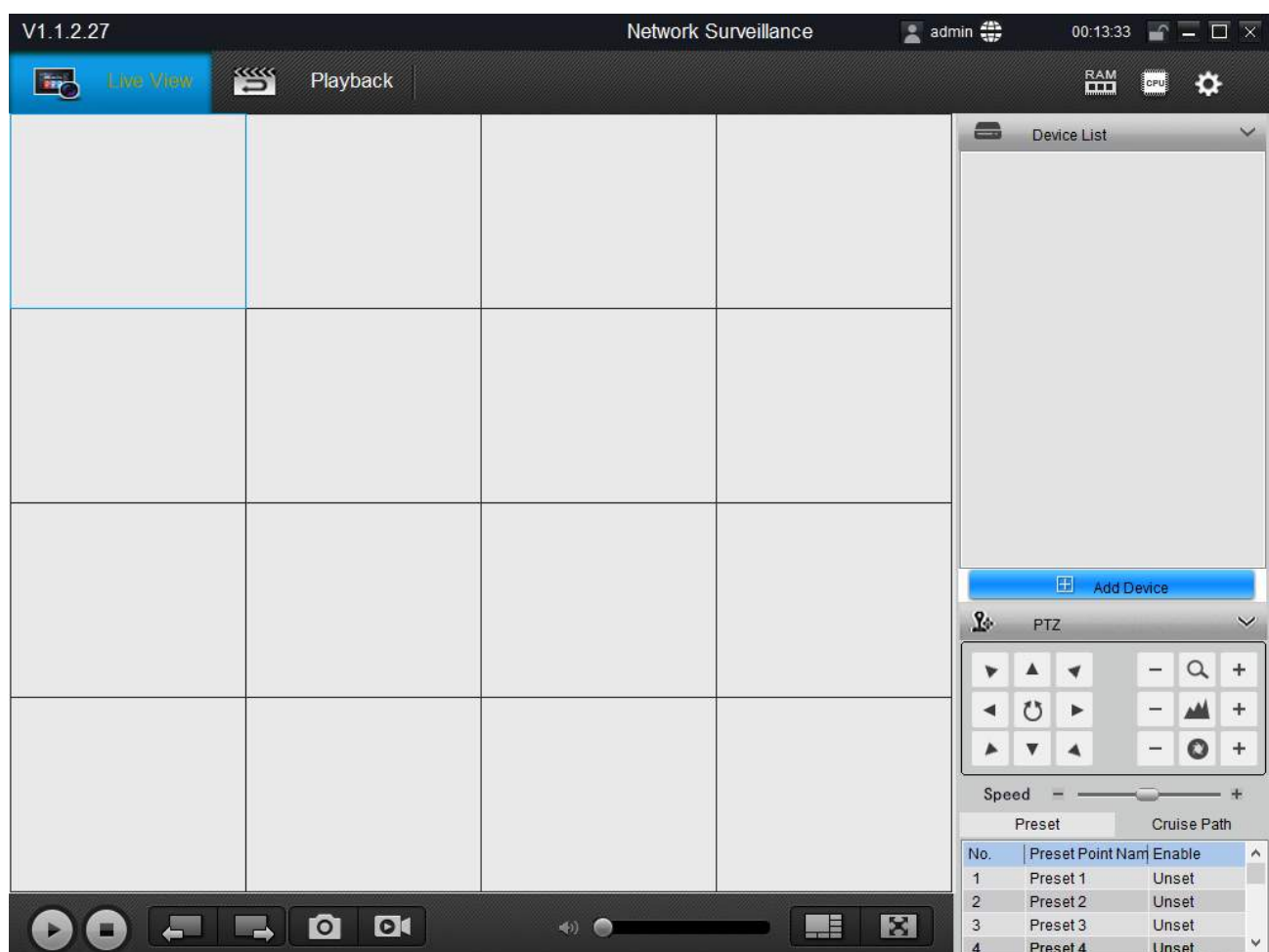




RM Series IP Cameras

WiFi IP Cameras



[SmartClient program Manual](#)

How to use management program for PC



Contents of this handbook

The range of RM series cameras is a range of IP cameras for network connection including the wireless transmission.

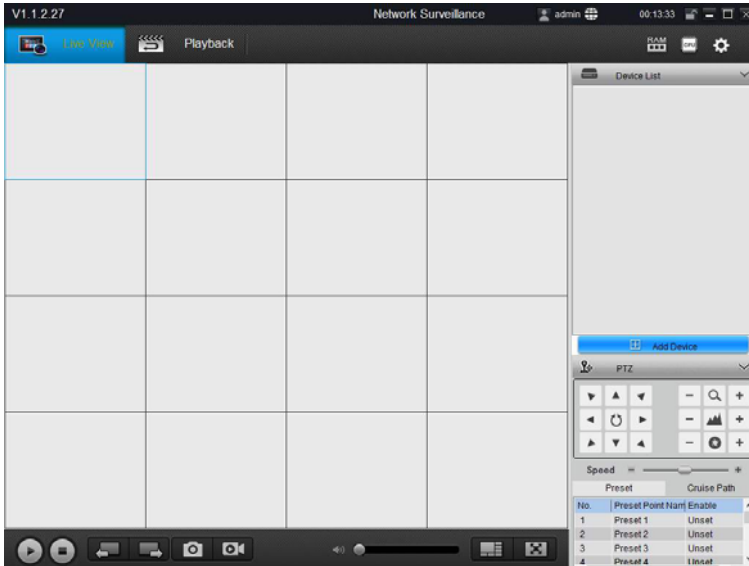
This manual explains how to use the computer program SmartClient used to search for cameras and to manage the display of the computer.

The CD supplied with the camera is included for Windows software

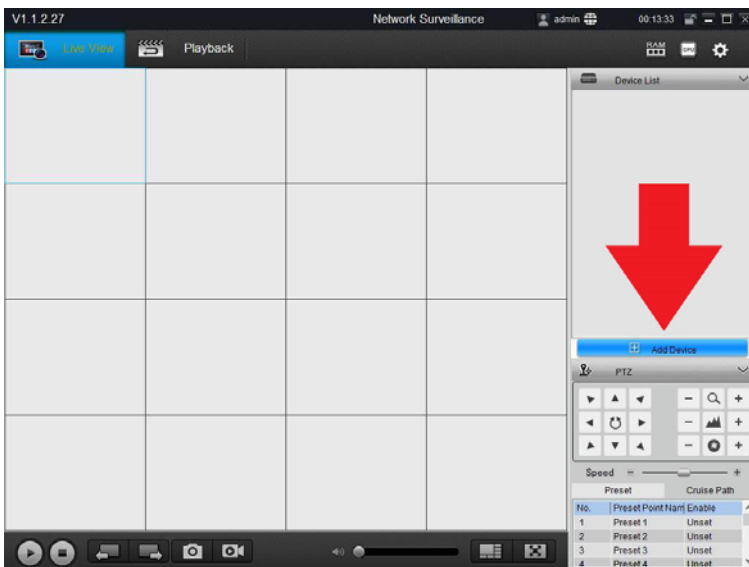
SmartClient.

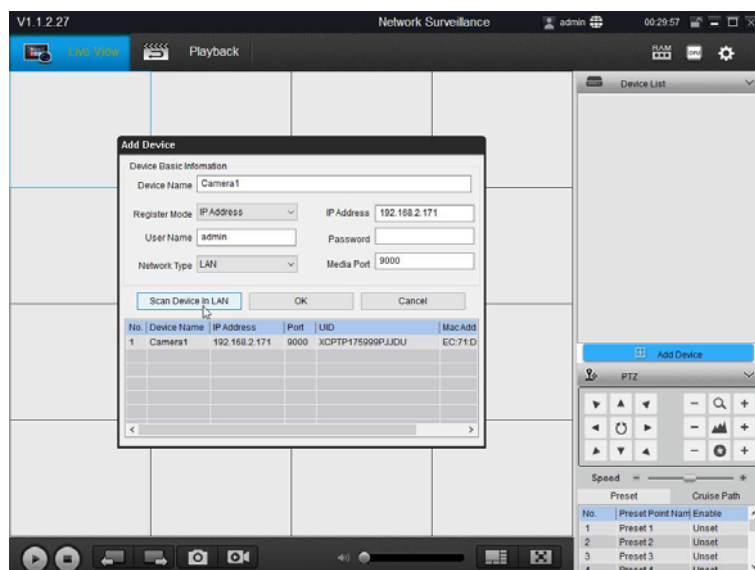
You first need to install it on your PC and run it.

cameras Search



To start press the button ADD DEVICE





The program searches all the RM Series cameras on the network and lists them in the window. To add them to the program just double click on the camera and insert the

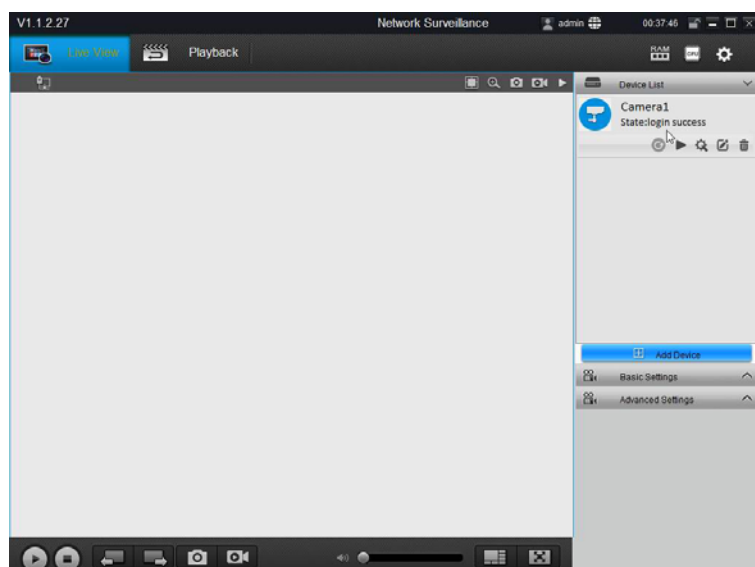
Factory Access Password: 1 2 3 4 5 .

The cameras of the factory access Data:

USERNAME: admin PASSWORD:

12345

The other parameters can be left unchanged. Press OK and verify that the message LOGIN SUCCESS next to the camera.





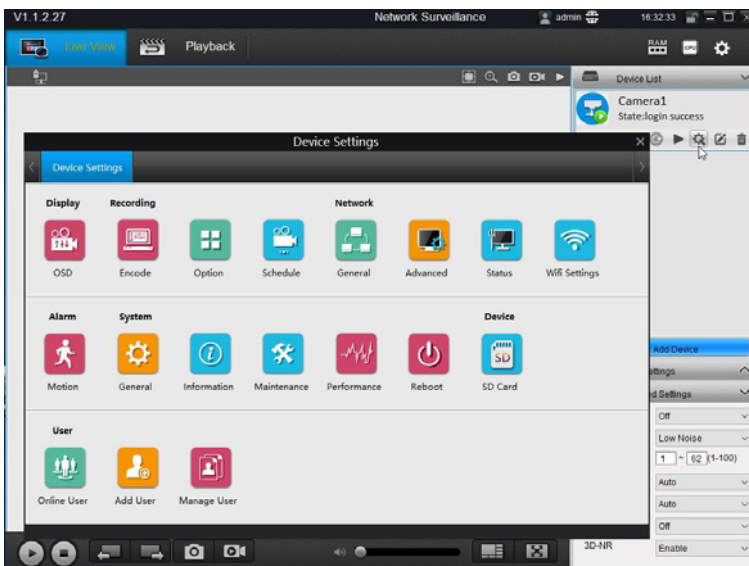
Wi-Fi Activation

Although you can use these cameras with wire liaison, their key feature is able to operate without network cable connecting to a Wi-Fi network. In order to do of course you need to have a Wi-Fi network and you have the place where you install the camera have good coverage.

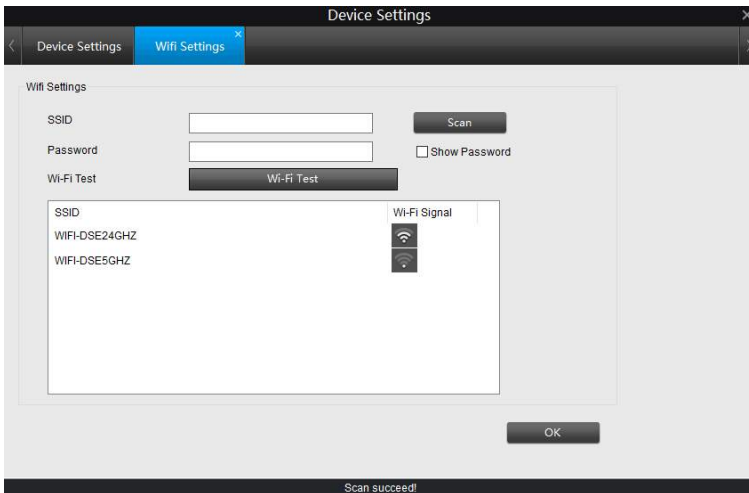
Pay particular attention to heavy obstacles, such as the home exterior walls, testing the reception of the signal at the point where you want to install the camera possibly using a smartphone.

Before you can connect to the wifi network camera must have it connected to its cable network, as seen in the previous chapter. This chapter explains how to switch the connection from wired to wireless.

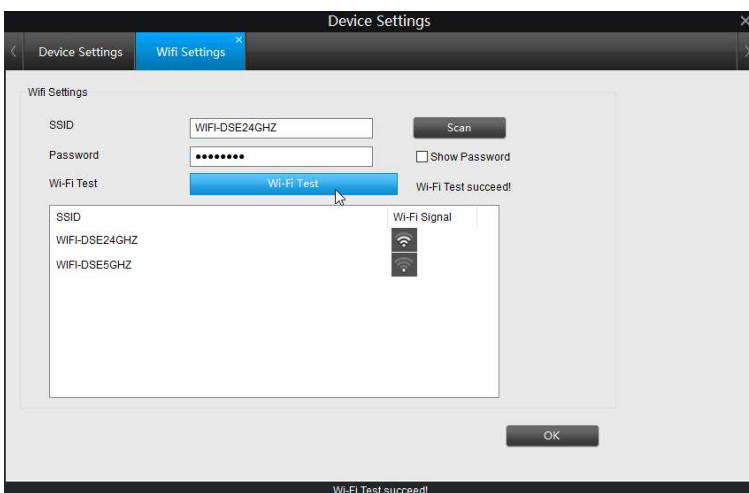
With the SmartClient program, first check that the camera appears correctly achieved by the program (LOGIN SUCCESS = green icon). Then access to camera settings by pressing the small icon settings



Open WiFi settings by clicking the icon WIFI SETTING



The camera will search for available wireless network and lists them in the table, showing alongside the power of the available signal. E 'can repeat the scan by pressing the SCAN button. Now double click on the network you want to connect the camera and enter the access password. Then WIFI awards TEST to verify the connection



As seen in the example above, the appearance of WIFI TEST SUCCEED indicates that the network is available, and the password is correct.

If the connection to be successful you must check the signal goodness and your password is correct.

Press OK and you can exit the program. At this point the camera is connected to the wireless network, and you can safely disconnect the network cable because from now on will no longer be necessary. Even if power is missing, the camera is able to reconnect to the wireless network autonomously.

Note that the camera attached to the wifi network takes on a different IP address than they had in the row connection. If you want to know the new IP that has been assigned by

SmartClient MANUAL

RM SERIES - IP CAMERAS WIFI

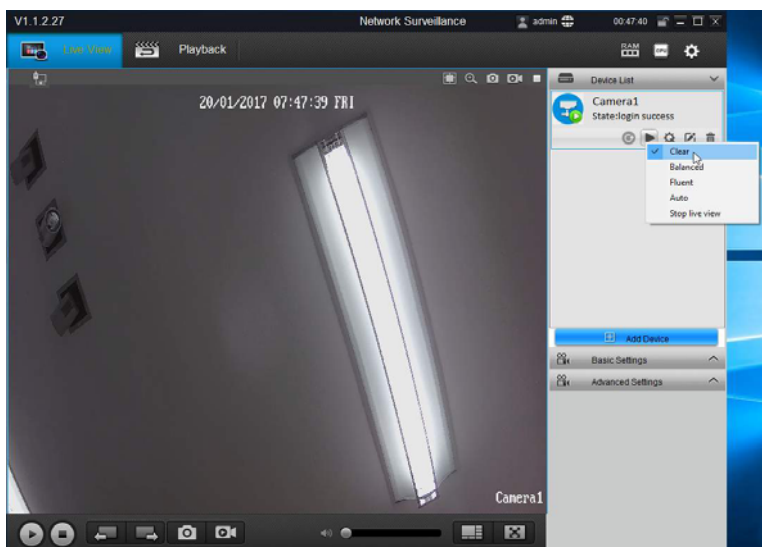


Page: 7

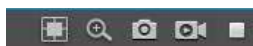
your network or use the Properties button again will search the cameras with ADD DEVICE button.

live viewing with SmartClient

To view the live camera image with SmartClient software, click the PLAY icon. E 'can choose from 4 video streaming management: CLEAR (full resolution and frame rate), BALANCED (compromise between quality and bandwidth used), FLUENT (low resolution for low bandwidth available), AUTO (the program decides in automatic mode according to the available bandwidth).



At the top right in the live video pane, there are commands to be used in live view



1 2 3 4 5

1 - Keep original aspect ratio of the image 2 - Show controls for digital zoom 3 - Capture a photo 4 - Start video recording 5 - Stop viewing live

If you click the button to the digital zoom, appears in the bottom right the commands.



1 2 3 4 5

1 - ZOOM REGION - Allows you to draw a box on the image to enlarge it. 2/3 - ZOOM IN / OUT - General Zoom throughout the image 4 - RESTORE - Restores natural vision. 5 - EXIT - Closes the zoom panel

At any time you can click the right button to return to normal viewing and close the zoom panel

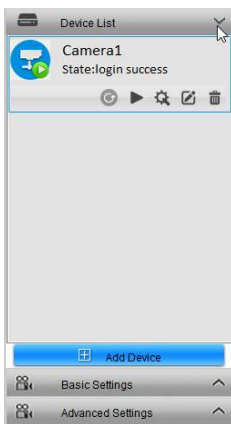
In the lower right side to adjust the audio volume (1) include the viewing window controls



1 2 3

The button multivision (2) allows you to activate the split screen for simultaneous viewing of up to 36 cameras. It 'also possible, with the right-most button (3), delete the program outline to see only the cameras in full screen.

To the right of the live image there is a control panel with some sections. The first is the DEVICE LIST



In the device list lists all the cameras that you have loaded into the program. The cameras that are present online, and that allowed the login, are distinguished by a small icon green PLAY.

To place the cameras in the viewing panes can be dragged with the mouse to the location you want.

The buttons below each camera allow the following functions



1 2 3 4 5

1 - If no connection to the camera, this button launches a new connection attempt

2 - Starts and stops Live Vision camera allowing you to choose from 4 video streaming management: CLEAR (full resolution and frame rate), BALANCED (compromise between quality and bandwidth used), FLUENT (low resolution for low bandwidth available), AUTO (the program automatically decide the mode depending on available bandwidth). 3 - Opens the camera settings which will be described in the following chapters of this manual

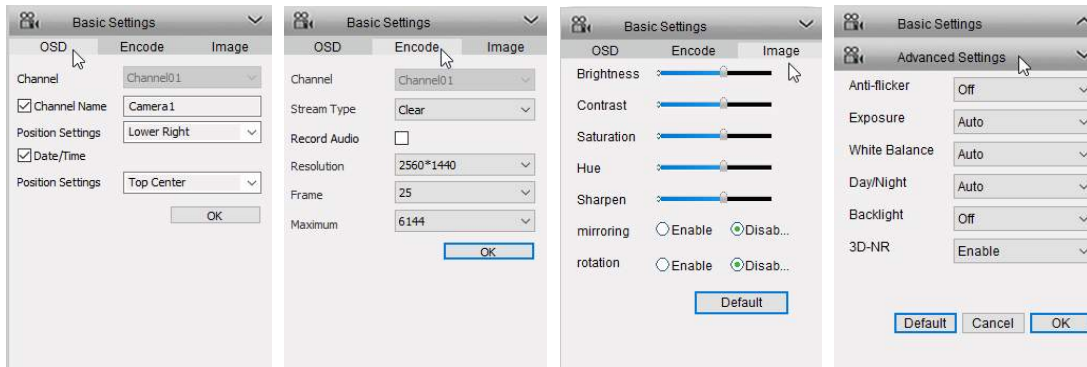
4 - Edit the connection setting (IP camera, door access credentials)

5 - Remove the camera from the program



SOFTWARE SmartClient - LIVE OPTIONS

In the right sidebar there are several settings that act in real time on the camera and change the live vision. These are settings that can be changed, as we shall see, in the camera setup menu, but are also available here to be able to adjust quickly the characteristics of vision.



CHANNEL NAME - You can enter the camera's distinctive name that will appear superimposed on the live view. Disable if you do not want to overlay **POSITION SETTING** - Defines the position of the insertion of the name of the camera (in the 4 corners, or centered at the top or bottom)

DATE TIME - Enables the stamping of date and time in the live image **POSITION SETTING** - Defines the overlay position of the date / time (in the 4 corners, or centered at the top or bottom)

STREAM TYPE - The camera can manage two video streaming, a heavier main stream high-resolution (CLEAR) and a secondary stream lighter to use the internet with small bandwidth (FLUENT). We can, as we have seen, to decide which stream to use when you start to live view. In this section we define the settings of the two streams.

RESOLUTION - Defines the resolution of the stream according to the camera manageable options (2560x1440, 2048x1536, 2304x1296, 1080P, 720P, 640x360). **FRAME** - Defines the number of frame per second streaming (2..25 f / sec) **MAXIMUM** - Restricts the maximum bandwidth usable by the sending of the video camera from 1024 to 8192 Kbs

BRIGHTNESS / CONTRAST / SATURATION / HUE / SHARPEN - Here you can adjust the live image according to their needs in order to compensate for any problems due to brightness or yield not optimal colors.

MIRRORING - Rotate mirror image from right to left. Option useful when the camera resumes in rear view.

ROTATION - Allows you to flip the image from top to bottom. this is useful when the



camera is installed upside down.

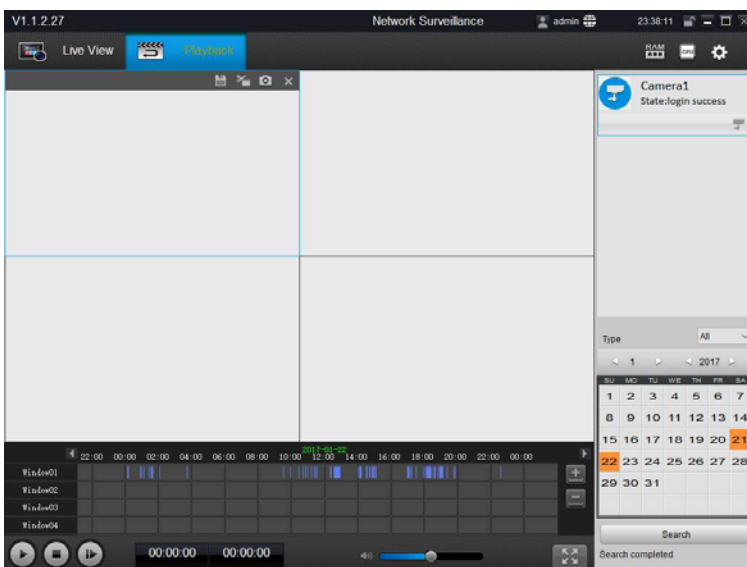
ANTIFLICKER - Avoid noise when shooting TV screens EXPOSURE - Adjusts the electronic shutter with some preconfigured options the possibility of manual adjustment. And 'advisable to keep the automatic management. WHITE BALANCE - Adjust the quality of the blank to adapt it to the DAY / NIGHT type of lighting - This option will normally be left to AUTO so that the camera is able to automatically switch from color vision (Day) to Black / White (Night / IR) based on the light. E 'can, in certain situations, force the camera to always remain in day mode (color) and night (B / W).

BACKLIGHT - Allows you to enable two types of digital compensation of light and dark. Backlight control is used when shooting a dark object on a light background (for example, the customer who enters into a store), Dynamic Range is used when there are in the image areas with very different brightness between them (for example under a porch)

3DNR - Reduction of digital video to be used to reduce noise present in the image disorders, for example in the case of shooting with little brightness. DEFAULT - Restore the image adjustments Factory

SOFTWARE SmartClient - REPRODUCTION

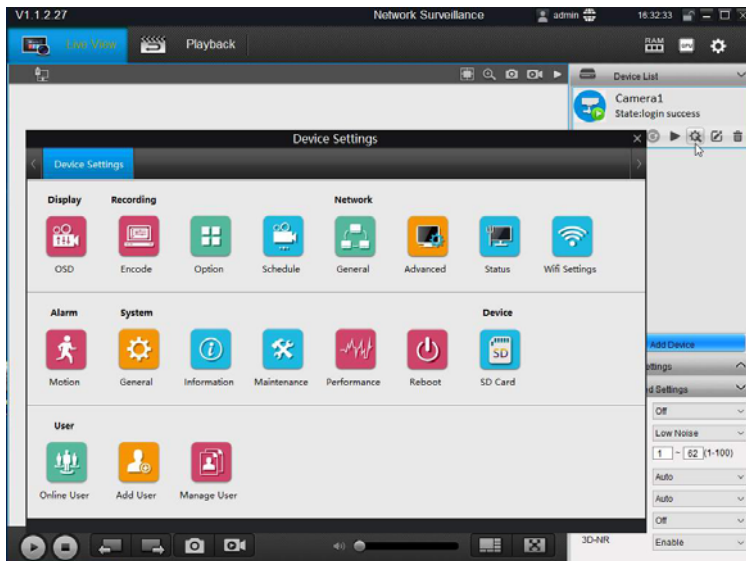
In the Playback area playing back video recorded on the camera's internal memory



Configuration options

The camera options can be configured using the browser or the SmartClient program.

The configuration page is as follows



For in-depth information about the configuration options, see the specific configuration manual